



7.5KW Hydraulic Trimming Machine 1500MM High Speed For Shelving

Our Product Introduction

for more products please visit us on wire-bendingmachine.com

Basic Information

- Place of Origin: Guangdong, China
- Brand Name: Jin Hongxiang
- Certification: CE
- Model Number: 7.5KW
- Minimum Order Quantity: 1 set
- Price: Negotiable
- Packaging Details: Export wooden case
- Delivery Time: 5-10 days or negotiation
- Payment Terms: L/C, T/T
- Supply Ability: 100 Set/Sets per Month



Product Specification

- Condition: New
- Machine Type: Trimming Machine
- Weight (KG): 980
- Warranty Of Core Components: 1 Year
- Control System: Hydraulic System
- Function: Trimming Mesh Edge
- Advantage: The Whole Machine Is Stable And Fast, And Can Be Trimmed Within 1.5m At A Time.
- Port: Shenzhen, China
- Highlight: **Shelving Hydraulic Trimming Machine, Hydraulic Trimming Machine 1500MM**



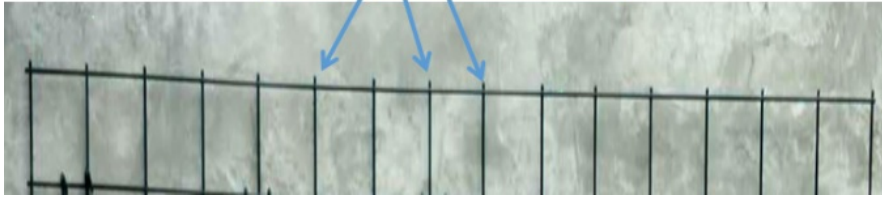
Product Description

Trimming Machine For shelving 1500MM



Trim Style

突出来的都需要修整
protruding iron head needs to be cut off



Function:

This machine is used to trim the protruding points of iron wire or cut off the excess iron wire ends. A mesh less than 1.5 meters long can be completed at one time in only 1 second. Really fast, simple and easy.

Application:

storage rack net, iron wire fence, net fan net cover, kitchen and bathroom rack supplies, refrigerator, oven basket, pet cage, etc

Name:

JX mesh trimming machine,
hydraulic trimming machine,
1.5m long trimming machine,
wire cutting machine,
fast trimming machine,
high-speed trimming machine

Performance characteristics:

1. The blade is 1.5m long and made of special technology. The mesh less than 1.5m long can be trimmed at one time, which is fast, time-saving and labor-saving. Wear resistant and durable.
There is a guardrail supporting mesh at the cutter, which can be pushed left and right, and the height and tangent angle can be adjusted up and down. Easily meet all kinds of needs.



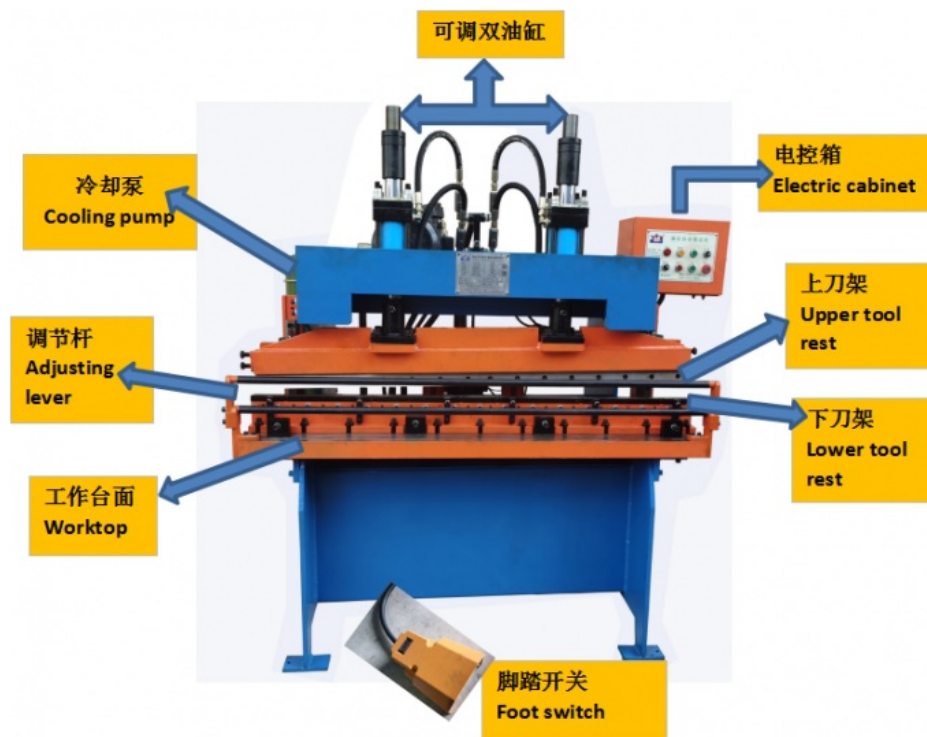
2. The double head is fixed, the large sliding rails on both sides slide, the heavy oil cylinder is adjustable, the whole machine is stable and powerful, and the cutting angle is controllable.



3. Large motor + high-pressure pump + large flow valve provide large power for the whole machine, and the hydraulic cooling pump provides large power for long-term operation without being affected by high temperature.



Structure show



The technical parameters of quick repair press trimming machine

model	JX-1000	JX-1250	JX-1500
Hydraulic system	5.5KW+PV2	5.5KW+PV2	7.5KW+PV2
Number of cylinders	100*50-50*1	100*50-50*1	100*50-50*2
Maximum cutting length at one time MM	≤1000	≤1250	≤1500
cutting speed M/MIN	1	1	1
Overall dimension (L x W x H) CM	125*110*190	150*110*190	175*110*190
weight KG	1000	1170	1500

Warm tip:

our products are constantly upgrading and adjusting.
If the pictures displayed are different from the real object,
the real object shall prevail, and will be confirmed when placing the order.

Our service:

The Company have been specializing in the production of welding forming equipment for more than 20 years, with strong technology, sophisticated experience, leading product quality in the industry, and have a good reputation in the industry. Each equipment is equipped with spare parts of excellent quality. Each equipment has undergone strict ex factory aging commissioning and long-term work trial. Besides, there are professional after-sales service technicians who can provide video guidance on installation and debugging at any time during working hours.

"All equipment shall be guaranteed for one year and maintained for life. You buy with peace of mind, using is very satisfactory!!



Dongguan Jinghongxiang Automation Equipment Co., Ltd.



13925780098



jhx16888@gmail.com



wire-bendingmachine.com

No. 78, Shangzhong Road, Shangdi Industrial Zone, Liaobu Town, Dongguan, Guangdong, China